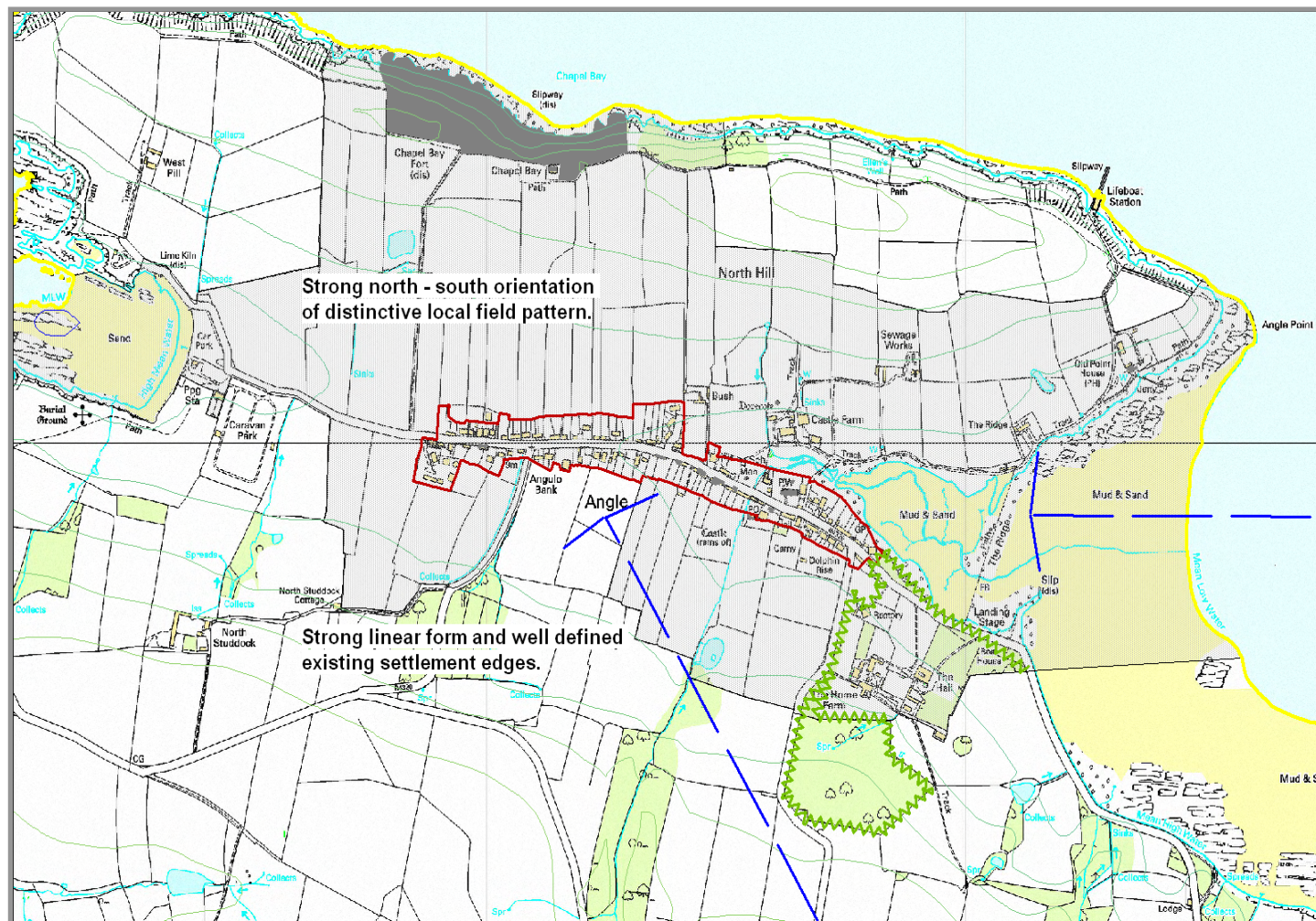


Angle – a medium-sized linear settlement with a high incidence of traditional cottages, sited in a long fold in the land on the end of the Angle Peninsula forming the southern edge to Milford Haven. The close proximity to Angle Bay and Milford Haven provides strong coastal sense of place. Angle is a fine example of an Anglo – Norman planned village and lies within the Milford Haven Waterway Registered Landscape of Outstanding Historic Interest in Wales. There is a distinctive local linear field pattern noticeable on the rising ground to the north and south of the main east-west orientated street. The church is set in woodland but its squat tower is distinctive and there are a number of notable old buildings, especially the castle. The centre of the village is a Conservation Area



Angle



Angle from the south



Woodland edge to Angle Bay

The concave landform, the linear settlement pattern and vegetation cover - mature woodland and hedgebanks - are locally distinctive landscape features

The recent housing cluster at the south-western extremity of the village is discordant with the dominant linear pattern of the village built form along the bottom of the shallow valley



Angle from the north west

This recent housing cluster projects outwards in a line perpendicular to the line of the main street and is poorly assimilated into the local landscape by vegetation



South-western edge of Angle

PEMBROKESHIRE COAST NATIONAL PARK
SETTLEMENTS CAPACITY STUDY - FIELD SURVEY SHEET

Settlement Name: Angle						
Date:		9/8/07		Surveyors:		JC/RM
LCA's in Local Context	LCA 7 – Angle Peninsula. Visual & Sensory Aspect data notes a high incidence of traditional cottage buildings and a strong coastal feel. The LCA Study noted that Angle is a great survival of an Anglo-Norman planned village.					Insert details from LCA Study
Settlement Type:			Notes: Harbour cottages on Angle Bay, The Ridge and a jetty suggest a harbour settlement but it is not strongly defined			
	Urban					
	Village	•				
	Harbour	•				
	Hamlet					
Settlement Attributes:						
Settlement Form:	General:	Linear	Nucleated	Dispersed	Planned	Organic
	Scale:	Large	Medium	Small		
	Density:	High	Medium	Low		
	Pattern:	Linear	Grid	Organic		
Settlement Landmark or Focal Point	Church	Castle	Monument	Cross	Earthwork	Standing Stone
	Large House	High Walls	River	Stream	Pond	Lake/Pool
	Bridge	Ford	Mill	Pound	Green	Hill
	Wood S to S	Sand Shore	Cliff	Rock Shore	Shingle Shore	Estuary
	Bay	Cove		Note <u>S</u> kyline features and direction of view		
	Conservation Area?		Yes/No	Insert Name(s) Angle		
	Listed Buildings?		Yes/No	Insert Number of buildings outside Conservation Area(s) None		
Settlement Edge Condition:	North	South	East	West	Insert refinements, e.g. NE, SW as appropriate	
	Hard			•	Abrupt transition to surrounding landscape with little or no cover	
	Muted	•		•	Smoother transition to surrounding landscape with some vegetation cover	
	Soft	•	•		Edge well integrated into surrounding landscape by vegetation cover	
	Woodland	• D	• D		Note <u>D</u> eciduous or <u>E</u> vergreen	
	Hedgebank	• M	• M	• M	Note <u>M</u> anaged or <u>U</u> nmanaged	
	Wall				Note height and materials	

Settlement Edge:	North	South	East	West	Insert refinements, e.g. NE, SW as appropriate	
Views out from within settlement			•		Note photograph location and OS Grid Ref and plot direction and angle of view on plan Across Angle Bay	
Views in from surrounding land		•			Note photograph location and OS Grid Ref and plot direction and angle of view on plan Higher ground	
Settlement Landform:	Flat	Rolling/Undulating	Hill & Scarp	Rocky	Convex	Concave
Surrounding Landform	Flat	Rolling/Undulating	Hill & Scarp	Rocky	Convex	Concave
Development Opportunities	Very limited - perhaps a small amount of residential infill only, confined to individual sites within the settlement boundary.					
Development Constraints	Very large Conservation Area extending northwards to the Chapel Bay fort, eastwards to Angle Point and westwards to West Angle Bay. Strong linear form and well-defined existing settlement edges, together with the settings of numerous listed buildings. There is a strong counterpoint of the north-south orientation of the field pattern contrasting with the dominant east-west axial linear built form of the village. These factors combine to give a very strong sense of place and local distinctiveness, and are important extant features of the characteristic mediaeval burgage plots. The village lies within the Milford Haven Waterway area, included on the Register of Landscapes of Outstanding Historic Interest in Wales					
Other Notes: The settlement edge to the south west corner is very hard as a direct consequence of the very recent housing construction along West Bay Close. This projection outwards from the main village axis is incongruous and should be avoided elsewhere in the village.						